

## Dual ID: Electronic access control.

Our EquipCare Dual ID is also optionally available for your machines. With this electronic access control, you can define exactly who can operate your machines and thus increase safety on your construction site.

You can easily manage Dual ID in your EquipCare Manager.



[www.wackerneuson.com/equipcare](http://www.wackerneuson.com/equipcare)



09/2022 EN-US



**WACKER  
NEUSON**  
*all it takes!*

## EquipCare Get networked with your machines



## EquipCare telematics solution: Your advantages at a glance:

With the EquipCare Telematics solution, you give your machines a voice. They actively report to you, for example to point out upcoming maintenance, possible operational malfunctions or unexpected changes in location. With EquipCare, all information concerning your machine fleet is just a click away.

EquipCare can also be integrated into your existing systems via an interface.



### Utilization optimization.

With EquipCare, you always have an overview of your machine fleet and know how it is utilized. This allows you to optimally distribute work among your machines and increase your productivity.

### Increase in efficiency.

With EquipCare, your machines actively check in with you to alert you to upcoming maintenance, and you can even set maintenance reminders. This makes it easier to plan maintenance in advance.



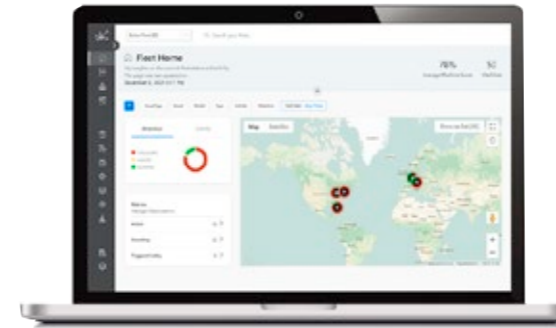
### Increase runtime.

Thanks to EquipCare, you know which repairs are needed on your machine before it's too late. This increases the uptime of your machines and your productivity.

### Transparency.

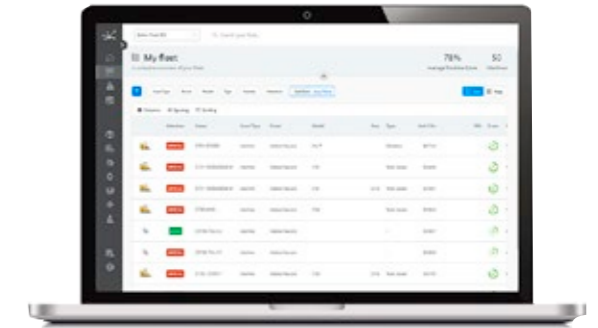
You can trace the progress of your vibratory plates' compaction at any time from your desk. This saves time and effort.

## EquipCare Manager: The main portal for your telematics data.



### The Home View

In the "Home" area, you will find the most important information bundled together. For example, regarding the status of a machine or its location.



### The Fleet View

In the "Fleet" area, you can see your machine fleet at a glance. Here, you have the option of calling up all the details of your machines on a map or in a list.



### The Manager Classic View

This is the heart of the EquipCare Manager. Here, you can find all the main functions.

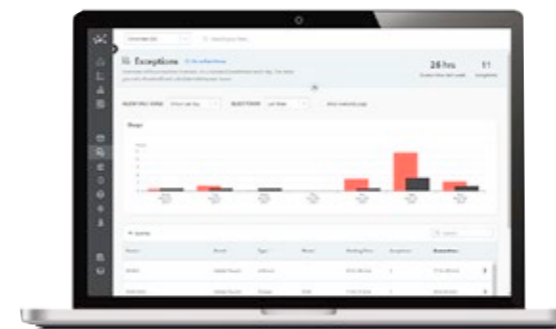
You can, among other things:

- generate and send reports
- set maintenance reminders
- set alarms (e.g. for geofencing)
- add new users and create accounts



### The Compamatic View

Compamatic - this is the combination of the Compatec compaction control and the EquipCare telematics solution. Compamatic supports you optimally in your daily work. You can track the compaction progress of your vibratory plates at any time from your desk and receive complete documentation.



### Exceptions View

In this view, you can define individual standards for your machines. For example, the maximum work hours for a workday. If these values are exceeded, you can find the corresponding information in the Exceptions view.